



In Touch

SPRING 2025



Have an Eggs-tra Fun Easter

May your baskets be filled with chocolate, your home filled with laughter, and your calendar filled with fun. The spring season is one of growth and optimism, so be sure to live life in full bloom! As you hop from activity to activity, you can feel good about strengthening connections and helping make our community better.

Contact

CCTC
206 N 2nd Street/PO Box 608
Santa Anna, TX 76878
Phone: 348-3124
Email: info@web-access.net

Office Hours:
Monday-Friday 9:00 a.m. to 5:00 p.m.

Office Closed:

- April 18, Good Friday
- May 26, Memorial Day

To report trouble while we are closed, call 636-3333 and a technician will return your call as soon as possible. For 24-hour internet support, call 1-833-458-0164.

Visit Our Website:
www.cctelco.org

From the Desk of Kandra Young, CEO & General Manager

Dear Valued Members and Customers,

It has been an incredible six months since I joined Coleman County Telephone Cooperative, and I am truly grateful for the warm welcome I have received from this wonderful community. It is an honor to serve as your CEO & General Manager, and I am excited about the future as we continue to grow — expanding our network and enhancing our product offerings to better serve you.



Our commitment to delivering fast, reliable communication services remains strong. We are nearing completion of the Mozelle fiber build, bringing cutting-edge connectivity to even more of our members. Looking ahead, we are excited to break ground on the Valera exchange in 2025, further expanding our fiber network to ensure our rural communities have access to the best technology available.

As we continue this progress, I look forward to visting with even more of you at our upcoming Annual Meeting. This is a great opportunity to connect, share updates about our cooperative, and celebrate the strong relationships that make our organization so special. Your support and engagement drive us to keep improving and innovating, ensuring you have the high-speed fiber internet and reliable phone services you depend on.

Thank you for being a part of the Coleman County Telephone Cooperative family. I cannot wait to see you at the Annual Meeting and continue working together to keep our community connected and thriving!

Sincerely,

Kandra Young
CEO & General Manager
Coleman County Telephone Cooperative

Gay Abernathy Celebrates Retirement

Gay Abernathy started her telecommunications career in 1971 with GTE in San Angelo, and spent seven years there as a customer service and business account representative. She joined CCTC in 1984 as a customer service representative and was promoted to office manager in 2013. "Gay has been an invaluable member of our organization, and we thank her for 41 years of dedication and hard work," said General Manager & General Manager, Kandra Young.

A lifelong resident of Coleman County and proud Rockwood native, Gay has always been active in her community. She serves on the Santa Anna Housing Authority Board, Park and Armory Board, and Rockwood Cemetery Association and has previously served on the Santa Anna ISD Board of Directors. She is also a dedicated member of The First Baptist Church of Santa Anna, where she has taught Beginner's Sunday School and Team Kids.

Beyond her career and community service, Gay cherishes time with her family, including her three sons and their families: Troy and Lisa Abernathy and sons Will and John, Tim and Miranda Abernathy, and Tony Abernathy and children Riley and Johnny.

We'll miss you, Gay!



Candidates for Director – Santa Anna South Exchange

Shannon Herrod

Shannon said, "It has been wonderful serving on this board since 2022, and learning about the rural broadband industry. It's an honor to help lead our cooperative in today's changing environment. I am very thankful for the team at CCTC; they provide the absolute best communications and customer service for our exchanges and service territories. If elected again to the CCTC Board of Directors, I will continue my efforts learning and collaborating about new and innovative ideas that would help provide solutions for our members. Being a lifetime resident of rural Coleman County helps me understand the importance of providing affordable, high-quality services to local families."



Shannon retired from SAISD in 2019 and now works part-time at their family-owned business, Herrod's Auto Sales. She is a member of the First Baptist Church of Santa Anna and previously served as the Youth Director for Santa Anna FBC from 2020-2024. She and her husband Johnny Herrod have made a home for 33 years and raised three children. They enjoy spending time with their two grandchildren.

Jerry Ellis

Jerry Ellis grew up 12 miles south of Santa Anna, where his deep-rooted connection to Coleman County began. A graduate of Santa Anna High School, he earned a Master of Science degree in physics from Sam Houston State University. After completing his education, Jerry spent 12 years working for Schlumberger Well Services, primarily along the Gulf Coast. Eventually, he returned to Coleman County to pursue ranching and other entrepreneurial endeavors.



In the late 1980s, Jerry served on the CCTC board before stepping down to manage Coleman County Broadcasting, a subsidiary of CCTC, until its sale. He thrived in the challenge of building the business and played a key role in bringing DirecTV and wireless television to rural communities. Today, he runs his family business, Mesquite Time, in Santa Anna. "I'd be proud to serve on the CCTC Board of Directors again," he said.

Jerry is married to Catherine Slimp Ellis, and together they have three children — who share his love for working with mesquite — and three grandsons. He and Cathy are active members of the Santa Anna Methodist Church, where Jerry has taught adult Sunday School for over 30 years.

Candidates for Director – Rockwood Exchange

John Vance

John Vance is a lifelong resident of Coleman County and a proud graduate of Mozelle High School. He furthered his education at Texas Christian University, completing the ranch management program. John and his wife, Debbie — a retired teacher — make their home on their farm in south Coleman County, where they cherish time spent with their two daughters, son-in-law, and three wonderful grandchildren.



As the founder and manager of Vance Company, John understands the critical role that reliable and up-to-date technology plays in business operations. His commitment to the community is evident through his service on the Coleman County Farm Bureau's Board of Directors, where he held various leadership roles, including county president for three years. Additionally, he has previously served as a member of the Coleman Airport Advisory Board.

John is passionate about giving back and regularly volunteers at events honoring both active-duty military members and veterans. He is eager to continue serving his community and would be honored to have your support for re-election to the CCTC Board of Directors.

Heath Sims

Born in Waxahachie, Texas, Heath Sims was raised on a row crop and cattle farm, instilling in him a deep appreciation for agriculture and rural life. He and his wife, Charlesa Sims, have two grown sons and are blessed with four beautiful grandchildren.

Heath earned a degree in Agricultural Education from Tarleton State University. He began his career as a teacher before transitioning into the agricultural industry as a seed and fertilizer salesman. His dedication to public service led him to serve two terms as Ellis County Commissioner, where he worked to improve his community. Additionally, he devoted 11 years as Pastor of Bethel Community Church in Waxahachie. A man of many talents, Heath is also a licensed auctioneer and, until his retirement in June 2024, worked at a John Deere dealership. Now, he serves as the Pastor of Gouldbusk Methodist Church, continuing his lifelong commitment to faith and service.



Heath and Charlesa completed their home in Rockwood in 2023 and made Coleman County their permanent residence. He now manages cattle and farmland, fully embracing the rural way of life he has always valued. Heath said, "I would be honored to contribute further by serving on the CCTC Board of Directors if elected."

Voting on Directors is a Cooperative Principal

Coleman County Telephone Cooperative, Inc. (CCTC) began in 1953 to provide low-cost, quality telephone service to our members. Since then, we've expanded our range of communications services to include broadband internet.

As a cooperative, CCTC is guided by these seven principles:

1. Voluntary and Open Membership
2. Democratic Member Control
3. Member Economic Participation
4. Autonomy and Independence
5. Education, Training and Information
6. Cooperation Among Cooperatives
7. Concern for Community

The second principal, "Democratic Member Control" will be in action at our 72nd Annual Membership Meeting on Friday, April 11. At this time, CCTC members will be able to vote in the Board of Directors election. Please take a few minutes to review the profiles of this year's candidates.



GO BIG & GO GIG

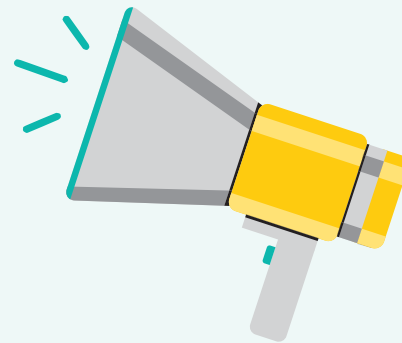
WE CUT THE PRICE OF OUR NEW GIG INTERNET PACKAGE IN HALF!

Now's the time to get big GIG speeds for a smaller price—pay just \$125 per month for the package that was previously \$250. Plus, your first month is free when you sign up or upgrade. Call 348-3124 today.



206 N 2nd Street/PO Box 608
Santa Anna, TX 76878
Phone: 348-3124
www.cctelco.org

NOTICE OF 72nd Annual MEMBERSHIP MEETING



Mark Your Calendar for Friday, April 11

- Santa Anna Civic Center (Armory Building)
- Registration and voting will begin at 6:00 p.m.
- Business meeting will begin at 7:00 p.m.

Drawings for Door Prizes, a \$500 Grand Prize, Plus Refreshments

Door prizes will be given to members as they register, and members must be present to vote, receive door prizes, and win prizes.

Action Will Be Taken on the Following:

- Report of Officers
- Election of two directors of CCTC
- All other business, which may come before the meeting

You must be a member of CCTC and attend the meeting in order to vote.

The Nominees are as Follows:

- **Shannon Herrod**, 2100 FM 2633, Santa Anna, TX 76878 (Santa Anna South)
- **Jerry Ellis**, 1051 CR 210 Santa Anna, TX 76878 (Santa Anna South)
- **John Vance**, 470 CR 256 Coleman, TX 76834 (Rockwood)
- **Heath Sims**, 401 CR 209 Rockwood, TX 76873 (Rockwood)